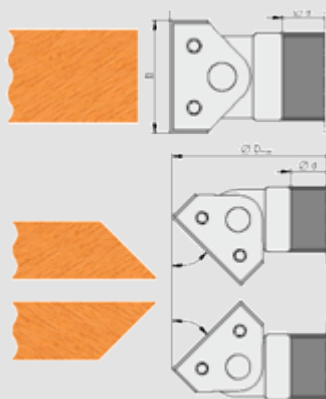


## Staviteľná uhlová fréza

### 5015 S

**Prevedenie:** výmenné britové doštičky

**Použitie:** Pre zrážanie hrán v ľubovoľných uhloch od  $0\pm 45^\circ$  po  $7,5^\circ$ .



Ø D (mm)	B (mm)	počet nožov	Ø d (mm)	n <sub>max</sub> (min <sup>-1</sup> )
160	50	2	30	4800 - 7200
1604	doplnok			



## Fréza uhlová

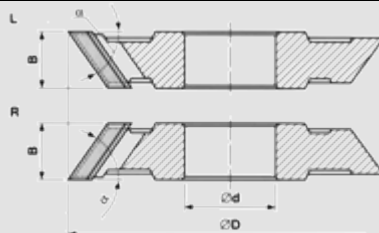
### 5015

**Prevedenie:** pájkované doštičky HM



Ø D (mm)	B (mm)	počet nožov	α(alfa) (stupňe)	Ø d (mm)	n <sub>max</sub> (min <sup>-1</sup> )
100 R	10	4	45°	30	12000
100 L	10	4	45°	30	
125 R	15	4	45°	30	10000
125 L	15	4	45°	30	
140 R	20	4	45°	30	9000

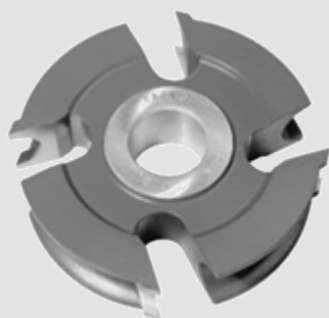
140 L	20	4	45°	30	
160 R	30	4	45°	30	8000



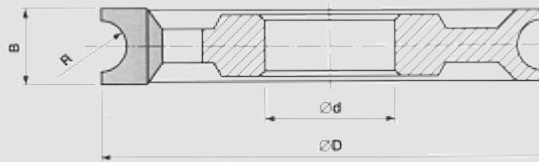
## Zaoblovacia fréza pólkruhov vydut

**5016**

**Prevedenie:** pjkované dotičky HM



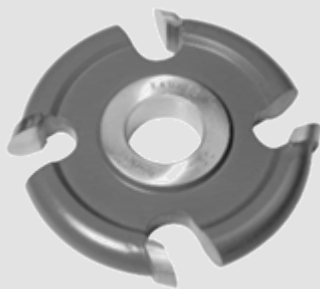
$\varnothing D$ (mm)	R	B (mm)	počet noov	$\varnothing d$ (mm)	$n_{max}$ ( $min^{-1}$ )
100	4	16	4	30	12000
100	5	18	4	30	
100	6	20	4	30	
100	8	26	4	30	
125	10	30	4	30	10000
125	12	35	4	30	
125	14	40	4	30	
125	16	45	4	30	
140	18	50	4	30	9000
140	20	58	4	30	



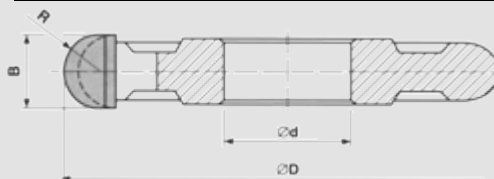
## Zaoblovacia fréza pólkruhová vypuklá

**5017**

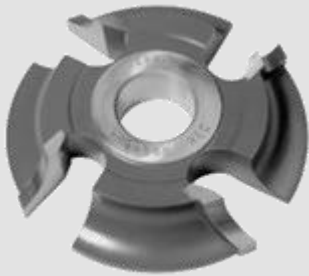
**Prevedenie:** pájkované doštičky HM



Ø D (mm)	R	B (mm)	počet nožov	Ø d (mm)	n <sub>max</sub> (min <sup>-1</sup> )
80	3	6,2	4	30	14000
80	4	8,2	4	30	
100	5	10,2	4	30	12000
100	6	12,3	4	30	
100	8	16,3	4	30	
125	10	20,4	4	30	10000
125	12	14,4	4	30	
125	14	28,6	4	30	
125	16	32,6	4	30	
140	18	36,6	4	30	9000
140	20	40,6	4	30	

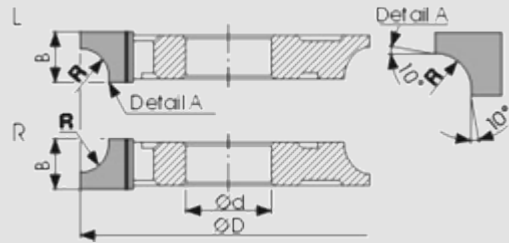


**Fréza zaobl'ovacia štvrtkruhová - vydutá**

**5018 R,L****Prevedenie:** pájkované doštičky HM

<b>Ø D (mm)</b>	<b>R (mm)</b>	<b>B (mm)</b>	<b>Z</b>	<b>Ød (mm)</b>	<b>n<sub>max</sub> (min<sup>-1</sup>)</b>
100 R	3	9	4	30	12000
100 R	4	10	4	30	
100 R	5	11	4	30	
100 R	6	12	4	30	
100 R	8	14	4	30	
125 R	10	18	4	30	10000
125 R	12	21	4	30	
125 R	14	24	4	30	
125 R	16	27	4	30	
140 R	18	30	4	30	
140 R	20	32	4	30	
160 R	25	37	4	30	
160 R	30	42	4	30	
<b>Ø D (mm)</b>	<b>R (mm)</b>	<b>B (mm)</b>	<b>Z</b>	<b>Ød (mm)</b>	<b>n<sub>max</sub> (min<sup>-1</sup>)</b>
100 L	3	9	4	30	12000
100 L	4	10	4	30	
100 L	5	11	4	30	
100 L	6	12	4	30	

100 L	8	14	4	30	10000
125 L	10	18	4	30	
125 L	12	21	4	30	



Ceny sú prepočítané konverzným kurzom 1€=30.1260 Sk.